

NOTES	
Unit:	202
Size:	2,285 RSF
Price:	\$2,353,550
Estimated Annual Common Charges:	\$17,821
Estimated Annual Real Estate Taxes:	\$18,515

SUITE 202
CORE

Exclusive sales and marketing:

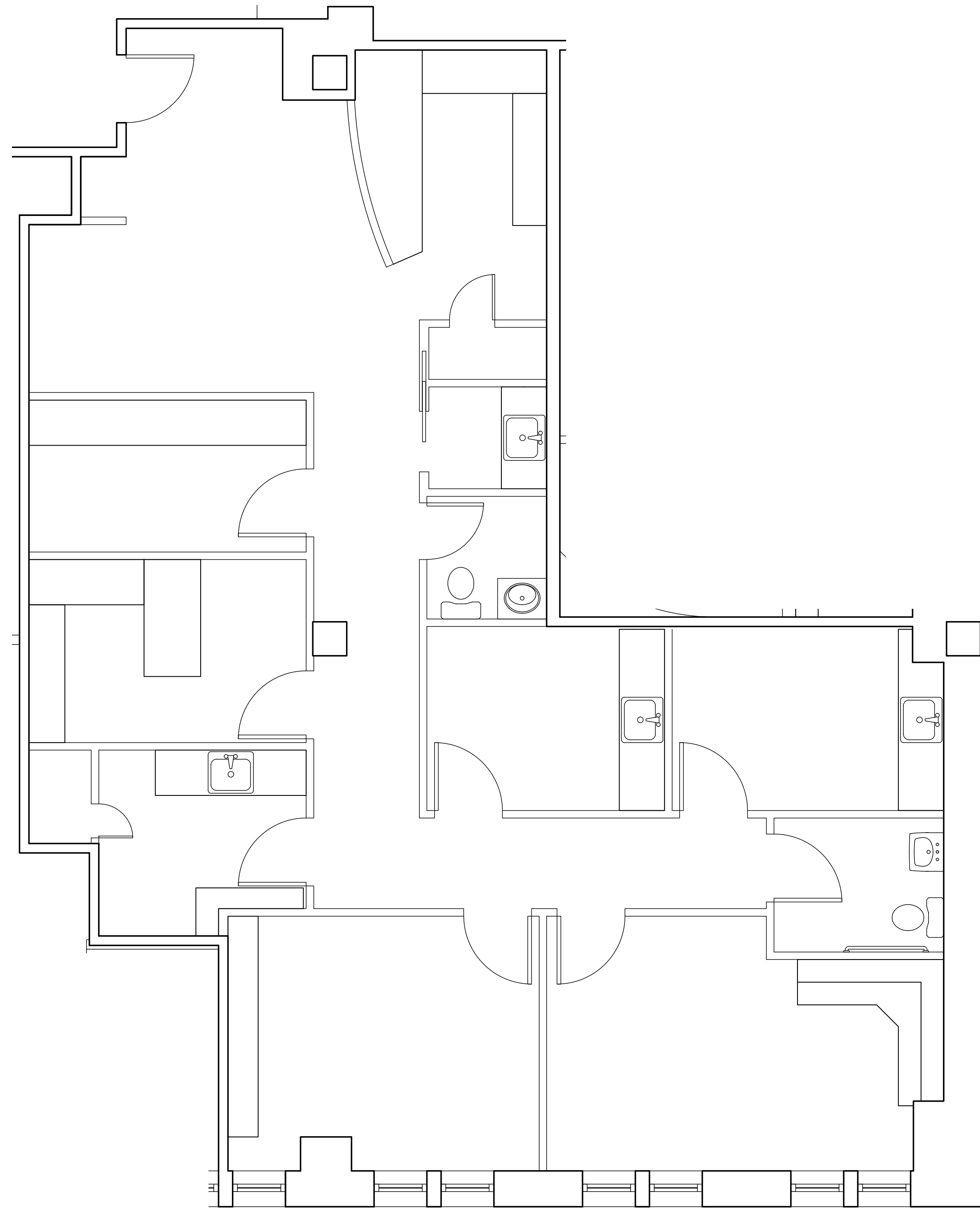
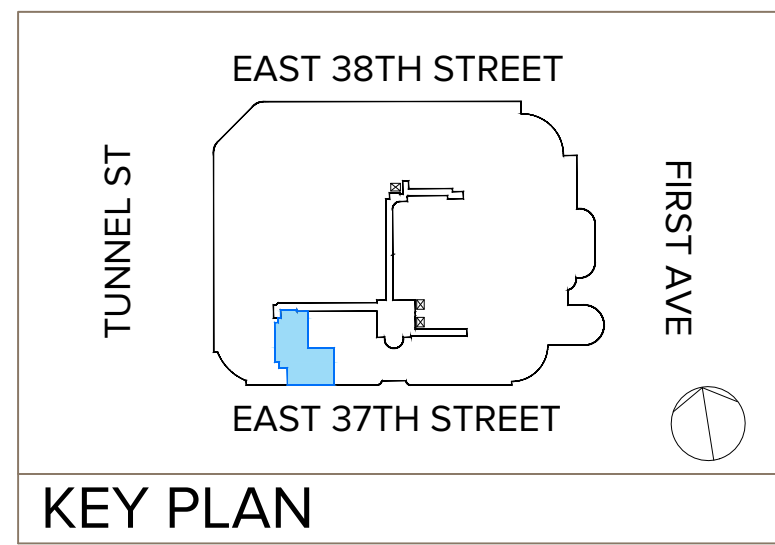
James Nelson
212.660.7710
James.Nelson@cushwake.com

John Ciraulo
212.660.7700
John.Ciraulo@cushwake.com



www.corinthianofficecondos.com

The complete offering terms are in an offering plan available from sponsor. File No. CD16-0142. Sponsor: 345 East 37th Street Property Owner, L.L.C., c/o 60 Guilders, LLC, 370 7th Avenue, Suite 1400, New York, New York 10001. Property location: 345 East 37th Street (a/k/a 330 East 38th Street), New York, New York 10016. This floor plan represents only an approximation of the size and perimeter of the Unit(s). Details, including but not limited to, partitions and furniture shown hereon, are for demonstration purposes only and do not reflect existing conditions, which likely vary from the conditions shown hereon.



NOTES

Unit:	202
Size:	2,285 RSF
Price:	\$2,353,550
Estimated Annual Common Charges:	\$17,821
Estimated Annual Real Estate Taxes:	\$18,515

SUITE 202 EXISTING

Exclusive sales and marketing:

James Nelson
212.660.7710
James.Nelson@cushwake.com

John Ciraulo
212.660.7700
John.Ciraulo@cushwake.com



www.corinthianofficecondos.com

The complete offering terms are in an offering plan available from sponsor. File No. CD16-0142. Sponsor: 345 East 37th Street Property Owner, L.L.C., c/o 60 Guilders, LLC, 370 7th Avenue, Suite 1400, New York, New York 10001. Property location: 345 East 37th Street (a/k/a 330 East 38th Street), New York, New York 10016. This floor plan represents only an approximation of the size and perimeter of the Unit(s). Details, including but not limited to, partitions and furniture shown hereon, are for demonstration purposes only and do not reflect existing conditions, which likely vary from the conditions shown hereon.