

### NOTES

<b>Unit:</b>	207
<b>Size:</b>	3,099 RSF
<b>Price:</b>	\$3,083,505
<b>Estimated Annual Common Charges:</b>	\$24,170
<b>Estimated Annual Real Estate Taxes:</b>	\$25,111

## SUITE 207 CORE

Exclusive sales and marketing:

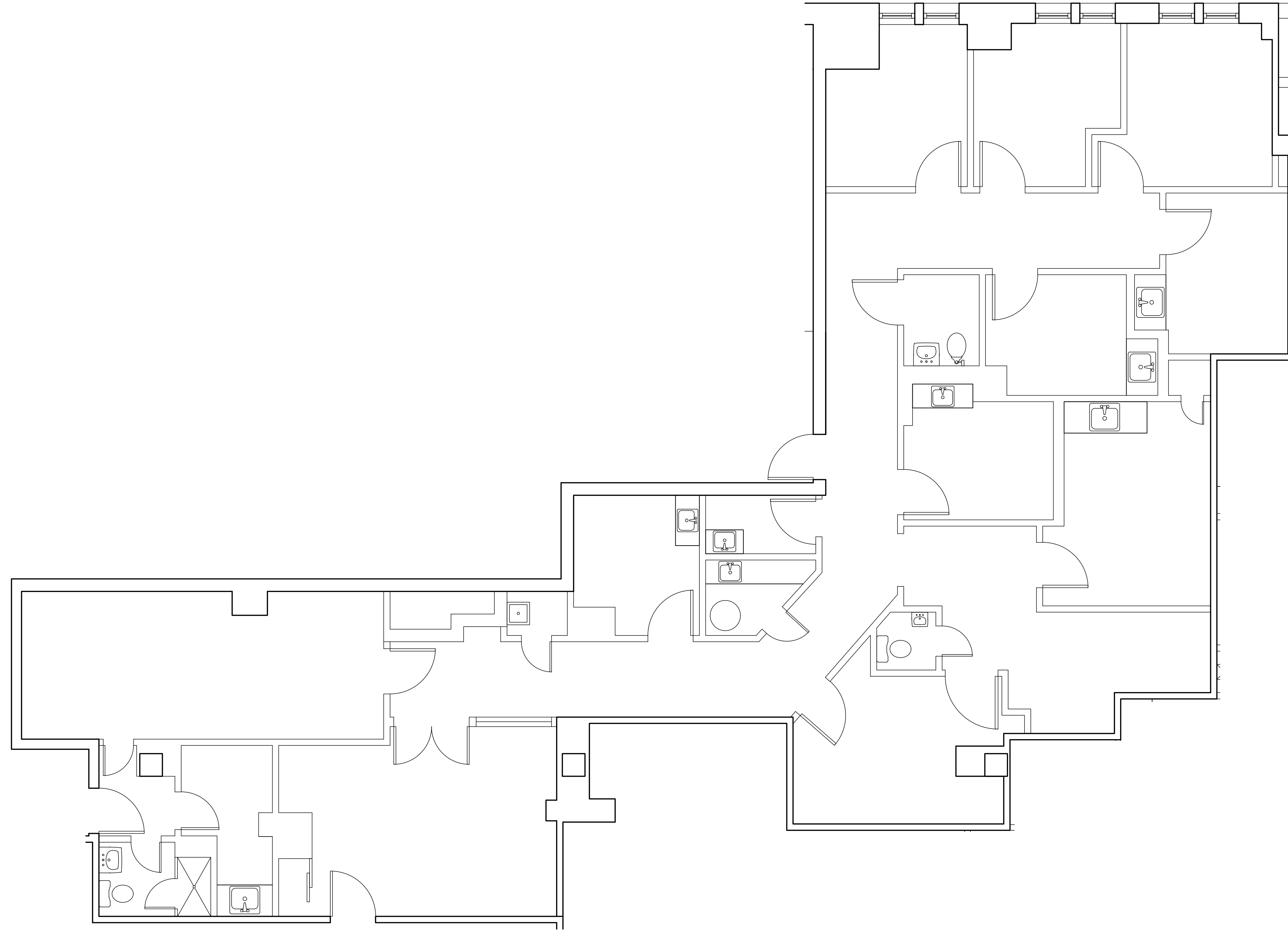
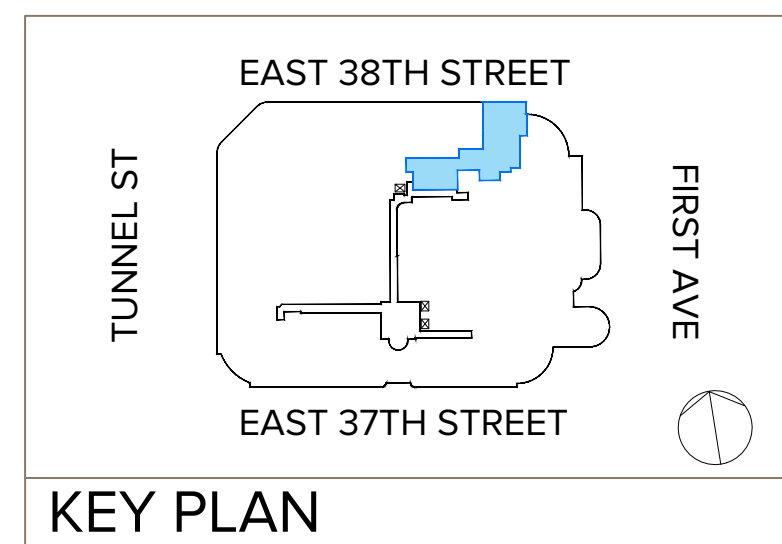
**James Nelson**  
212.660.7710  
James.Nelson@cushwake.com

**John Ciraulo**  
212.660.7700  
John.Ciraulo@cushwake.com



[www.corinthianofficecondos.com](http://www.corinthianofficecondos.com)

The complete offering terms are in an offering plan available from sponsor. File No. CD16-0142. Sponsor: 345 East 37th Street Property Owner, L.L.C., c/o 60 Guilders, LLC, 370 7th Avenue, Suite 1400, New York, New York 10001. Property location: 345 East 37th Street (a/k/a 330 East 38th Street), New York, New York 10016. This floor plan represents only an approximation of the size and perimeter of the Unit(s). Details, including but not limited to, partitions and furniture shown hereon, are for demonstration purposes only and do not reflect existing conditions, which likely vary from the conditions shown hereon.



## NOTES

<b>Unit:</b>	207
<b>Size:</b>	3,099 RSF
<b>Price:</b>	\$3,083,505
<b>Estimated Annual Common Charges:</b>	\$24,170
<b>Estimated Annual Real Estate Taxes:</b>	\$25,111

## SUITE 207 EXISTING

Exclusive sales and marketing:

**James Nelson**  
212.660.7710  
James.Nelson@cushwake.com

**John Ciraulo**  
212.660.7700  
John.Ciraulo@cushwake.com



[www.corinthianofficecondos.com](http://www.corinthianofficecondos.com)